



HOMETECH

WINDOW CORPORATION



BLINDS + GLASS

Blink Blinds + Glass is a new blinds-between-glass IG panel for doors and windows.

MEET BLINK

Manufacturers, builders and homeowners wanted a simple solution that addressed and solved their concerns about the safety, cleaning, and lack of ease associated with traditional blinds. That's why ODL created a modern alternative to traditional blinds. Blink Blinds + Glass is a new blinds-between-glass IG panel for doors and windows.

Building upon our 70-year history of developing IG panels for doors, ODL continues to innovate in the blinds-between-glass category, where we have been the industry leader for over 20 years. Our most recent product innovation, Blink Blinds + Glass, allows for custom sizes and colors in as few as eight days, with the quality, reliability, and warranty you've come to expect from ODL. Homeowners and window manufacturers can rely on Blink Blinds + Glass for designs and options to fit every home.

Now you can order just 1! All the features and options of the new Blink Blinds + Glass design, available in custom sizes, delivered in just 8 days*. Ideal for both doors and windows (casement, fixed, sliding, and awning).

PROGRAM DETAILS:

- Dimensions -
 - 14-80" wide
 - 13-80" tall
 - 1" thick
- Tempered glass - up to 17 sq ft (above 12 sq ft dual operator)
- Annealed glass - up to 15 sq ft (single operator)
- Minimum Quantity = 1
- Eight working days to deliver (*Ten for West Coast)♦

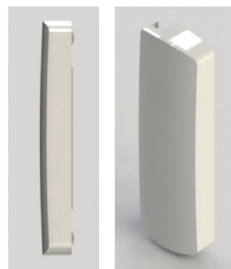
ADDITIONAL FEATURES:

- High or low operator position above 30" height◊
- Left- or right-hand operator
- Low-E options -
 - Single: 270, 272, 366
 - Dual: 189 /270, 189/272, 189/366
- Streamlined operator design

AVAILABLE COLORS:

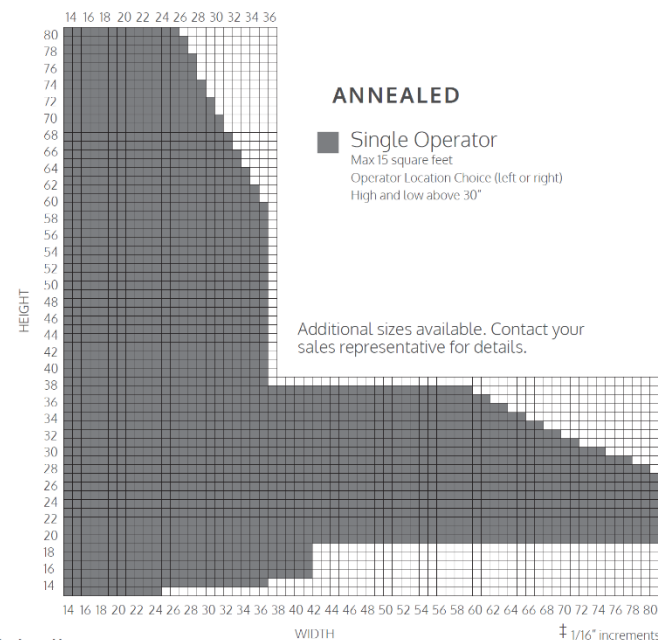
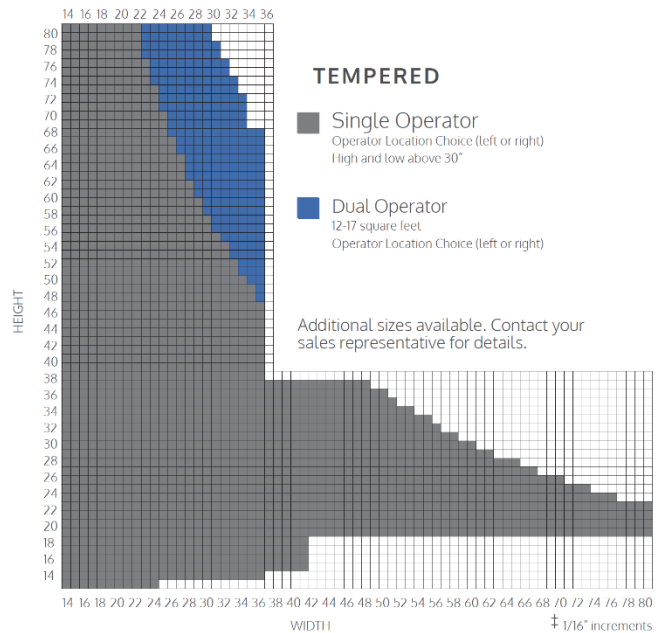


OPERATOR:



0.539" thickness

BLINK BLINDS SIZE RANGE‡



◊Single Operator Only
♦US Only. 15 days for Canada